

USB-to-Serial CABLE / USB 串列介面轉換線

Overview/ 產品敘述

The USB-to-Serial CABLE provides bi-directional connectivity between single standard USB compliant host equipment and particular serial communication device. According to the device requirement, customer can choose the cable for efficient conversion.

USB串列介面轉換線提供單一的標準USB相容主機設備和特定的串列通訊裝置之間進行雙向性的連接。客戶可以依據裝置需求進行有效率的串列介面轉換

- UR43-232M9-B1L20C01 → USB to **Cermate HMI cable** (屏通)
- UR43-422R8-B1L20M01 → USB to **Mitsubishi FX Series PLC cable** (三菱)
- UR43-485M9-B1L20S01 → USB to **Siemens PLC PPI cable** (西門子)

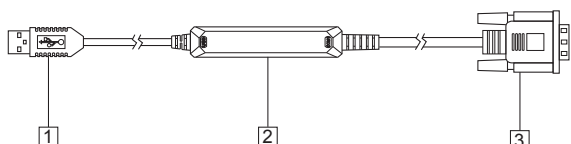
Specifications/ 產品資訊表

| | | UR43-232M9-B1L20C01 | UR43-422R8-B1L20M01 | UR43-485M9-B1L20S01 |
|-----------------------------|----------------|-----------------------------------|---------------------|---------------------|
| Input Voltage/ 輸入電壓 | | 5VDC from USB port / 從USB端口輸入5VDC | | |
| Input Current/ 輸入電流 | | 120mA | | |
| Interface/ 介面 | USB | Version 1.1 | | |
| | COM1 | RS-232 | RS-422 | RS-485 |
| | COM1 Connector | 9pin-male D-sub | 8pin-male DIN | 9pin-male D-sub |
| Operating Temperature/ 操作溫度 | | 0°C to 50°C | | |
| Storage Temperature/ 儲存溫度 | | -10°C to 60°C | | |
| Length/ 長度 | | 2M | | |
| Weight/ 重量 | | 97g | | |

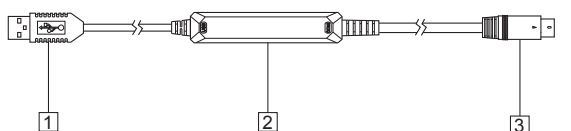
1

Product Appearance/ 產品外觀

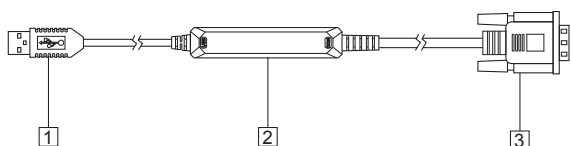
UR43-232M9-B1L20C01 (Cermate HMI 屏通)



UR43-422R8-B1L20M01 (Mitsubishi FX Series PLC 三菱)



UR43-485M9-B1L20S01 (Siemens PLC PPI 西門子)



- 1 USB interface/ USB介面
- 2 Converter/ 轉換器
- 3 COM1 interface/ COM1 介面

2

Connections/ 連接端口

COM1 interface/ COM1介面

UR43-232M9-B1L20C01 (Cermate HMI 屏通)

| Pin | Description | |
|-----|-------------|-------------|
| | Pin | Description |
| 1 | None | |
| 2 | RS-232 TXD | |
| 3 | RS-232 RXD | |
| 4 | None | |
| 5 | SG | |
| 6 | None | |
| 7 | None | |
| 8 | None | |
| 9 | None | |

UR43-422R8-B1L20M01 (Mitsubishi FX Series PLC 三菱)

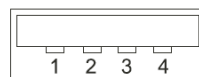
| Pin | Description | |
|-----|-------------|-------------|
| | Pin | Description |
| 1 | RS-422 RX+ | |
| 2 | RS-422 RX- | |
| 3 | SG | |
| 4 | RS-422 TX- | |
| 5 | None | |
| 6 | None | |
| 7 | RS-422 TX+ | |
| 8 | None | |

UR43-485M9-B1L20S01 (Siemens PLC PPI 西門子)

| Pin | Description | |
|-----|-------------|-------------|
| | Pin | Description |
| 1 | None | |
| 2 | None | |
| 3 | RS-485 + | |
| 4 | None | |
| 5 | SG | |
| 6 | None | |
| 7 | None | |
| 8 | RS-485 - | |
| 9 | None | |

3

USB interface/ USB介面



| Pin | Description |
|-----|-------------|
| 1 | VCC +5V |
| 2 | D- Data - |
| 3 | D+ Data + |
| 4 | GND Ground |

Installation/ 安裝相關

USB connector/ USB連接端:

The USB converter requires to connect with PC that equipped with any standard USB Type A port compliant with Universal Serial Bus Specification 1.1. USB數據轉換器需要連接有標準USB A port 並相容USB1.1的電腦

The proper operation of the interface in the computer requires the installation of a device driver.

The device driver can be downloaded from the following link:

<http://www.cermate.com/>

The file to be downloaded from "UR25/43 Driver"

此操作介面連接於電腦時需要安裝驅動程式，驅動程式可至本公司網站 WWW.CERMATE.COM 下載，可從 "UR25/43 Driver" 進行連結下載

System requirements for driver installation/ 驅動程式系統需求:

Pentium II or higher
Windows 98/ME/NT/2000/XP/Vista/7/8/10
256MB RAM
1GB hard disk space/ 1GB硬碟空間

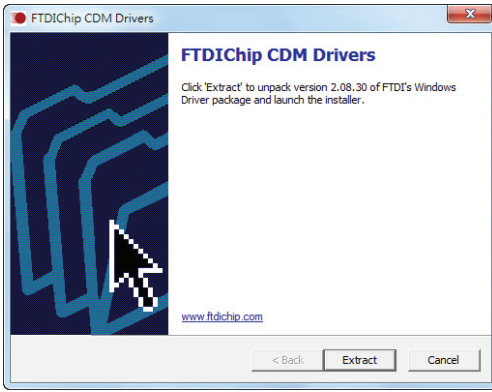
The driver comes in a self-installing executable file with the name "USB Serial Port(COM?)"; the installation of the driver must be done before connecting the converter to the USB port of the computer.

驅動程式會自行執行"USB Serial Port(COM?)"名稱的檔案，請注意連結USB數據轉換器至電腦前，驅動程式需於電腦安裝完成

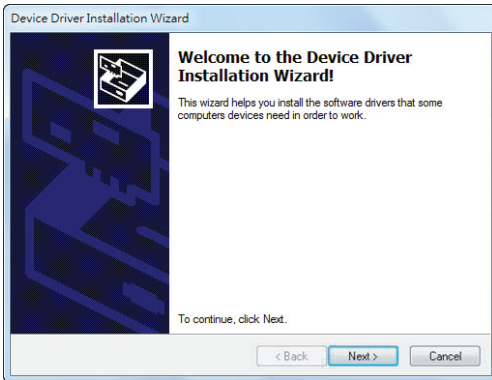
4

To install the driver, launch the downloaded executable file, then follow the instructions on screen. You must accept the terms of the license agreement to complete the installation procedure.

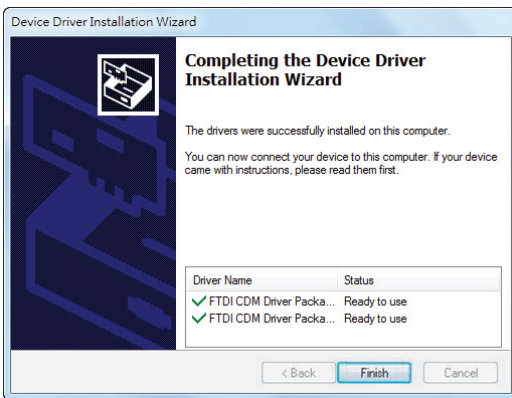
請依照下面螢幕上的指示進行安裝，必須接受許可協議才能完成安裝步驟



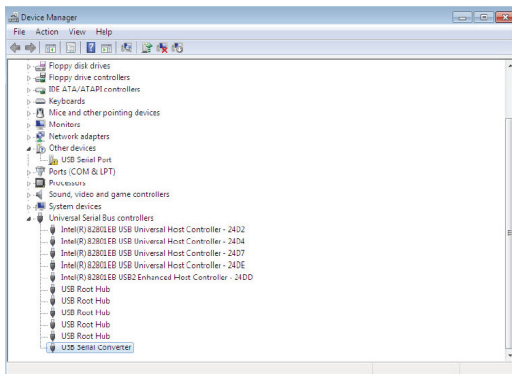
Click "Extract" to unpack Windows Drive package and launch the installer.
點選"Extract"後開始安裝驅動程式



Click "Next" start to install the Drivers for the UR 43 product.
點選"Next"執行後繼續驅動程式安裝步驟



Click "Finish"
The device driver install completed.
點選"Finish"完成驅動程式安裝



You can check the Device Manager to see the USB Serial Converter.
可以進入「裝置管理員」查看USB串列轉換線是否完成安裝

Technical Safety Notes/ 技術安全事項

Qualified personnel/ 合格人員

The device should only be used by qualified personnel. Qualified personnel as referred to in safety guidelines in this documentation are persons who are authorized to commission, ground, and tag circuits, equipment, and systems in accordance with established safety practice.

此裝置必須由合格人員操作使用。此人依據公認的安全指示須有合格的委託、理由和電路、設備和系統

The equipment/system or the system components may only be used for the applications described in this manual, and only in combination with the equipment, components, and devices of other manufacturers as far as this is recommended or permitted by Cermate.

The product will function correctly and safely only if it is transported, stored, set up, and installed as intended, and operated and maintained with care.

裝置和系統或是系統元件只能使用於此手冊描述的應用範圍，而且只和本公司建議或允許的裝置、元件和其他製造業者設備進行連接。
當產品被謹慎操作和維修時將會正常和安全地運作除非有目的的進行運輸、儲存、豎立或是安裝。

Warnings/ 注意事項

- Do not use this product near water or install it in areas subject to excessive dust, oily mist, conductive dust, corrosive gas and flammable gas.
 - Do not mount this product on the an unstable location and subject to high temperature, moisture, or rain.
 - To avoid damage of internal components, do not place the product on a vibrating surface.
 - Your device and its enhancements may contain small parts. Please keep them out of the reach of small children.
1. 請勿在有水的地方使用產品或把產品安裝在有過度粉塵、油性霧氣、導電的粉塵、腐蝕性和可燃性的氣體區域。
 2. 請勿將產品安裝於不穩定和易受高溫、濕氣和雨水的區域。
 3. 避免傷害產品內部組件，不要將產品放在會震動的表面。
 4. 產品和其增強模組可能包含小型組件，請勿讓小孩拿取或把玩。

The USB-to-Serial cables is only used for industrial PLC and not used for IT or consumer products.
USB串列介面轉換線只限於工業PLC上，不適用於IT產品和消費性電子產品

Indicated loss of life, severe personal injury, or substantial property damage will result if proper precautions are not taken.
如果沒有執行適當的預防措施可能將會導致生命損害、嚴重受傷和巨大的財產損失

Disposal Instructions/ 廢棄物處理說明

Do not throw this electronic device into the trash when discarding. To minimize pollution and ensure utmost protection of the global environment, please recycle. 當丟棄此電子產品時請勿直接丟進垃圾桶。為了減少汙染及確認對全球環境的保護，請回收此產品。

Copyright Declaration/ 版權聲明

Reproduction of the contents of this copyrighted document, no part of this publication may be reproduced, stored in a retrieval system, or transmitted, in any form or by any means, electronically, by photocopy, recording or otherwise, without the prior written permission of Cermate Inc.

本文件內容版權為Cermate Technologies Inc.所有，未經本公司許可，本出版品任一部分不可以任何形式或電子的辦法、攝影、錄製或是其他方法在檢索系統裡進行複製及儲存或是傳輸。