

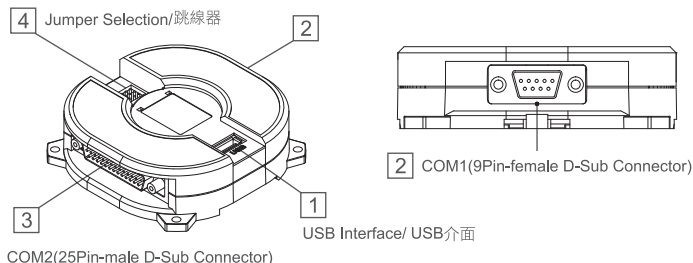
## USB-CONVERTER / USB 數據轉換器

### Overview/ 產品敘述

The USB-CONVERTER provides bi-directional connectivity between any standard USB compliant host equipments and serial communication devices. It is not only support the USB-to-Serial function but also a Serial-to-Serial converter with RS232/422/485 interface via COM2(DB25) and COM1(DB9).

USB數據轉換器提供任何標準USB相容主機設備和串列通訊裝置之間進行雙向性的連接。它不僅能執行USB與通訊之間的轉換，也可以透過COM1(DB25)和COM2(DB9)進行RS-232/422/485之間相互轉換

### Hardware design of the USB-CONVERTER/ 產品外觀



### Specifications/ 產品資訊表

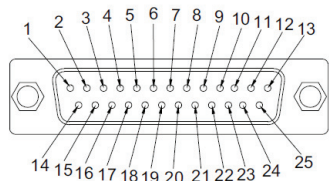
Input Voltage/ 輸入電壓	5VDC from USB port or COM2 (Pin7&pin25) / 從USB端口或是COM2(Pin7&Pin25)輸入5VDC
Input Current/ 輸入電流	120mA
ESD Protection/ 靜電保護	Transient Voltage Suppressors (TVS)
Mounting Method/ 安裝方式	35mm Din-Rail mounting/ 軌道式安裝(35mm)
Interface/ 介面	USB Version 1.1
	COM1 9Pin-female D-Sub Connector with RS232
	COM2 25Pin-male D-Sub Connector with RS232/422/485
Temperature Limitation/ 溫度限制	Operating/操作 0°C to 50°C
	Storage/儲存 -10°C to 60°C
Accessories/ 配件	USB Extension Cable(2M) x1 / 2公尺USB延長線x1 RS232 Extension Cable(1.8M) x1 / 1.8公尺RS232延長線x1

### Connections/ 連接端口

#### COM1: 9Pin-female D-Sub Connector (RS232)

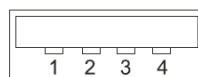
Pin	Description
1	None
2	RS-232 RXD/RS-232 TXD
3	RS-232 TXD/RS-232 RXD
4	None
5	SG
6	None
7	RTS/CTS
8	CTS/RTS
9	None

#### COM2: 25Pin-male D-Sub Connector (RS232/422/485)



Pin	Description	Pin	Description
1	None	14	RS-422 TXD+ and RS-485 D+
2	RS-232 TXD	15	RS-422 TXD- and RS-485 D-
3	RS-232 RXD	16	RS-422 RXD+
4	RS-232 RTS	17	RS-422 RXD-
5	RS-232 CTS	18	TTL TX
6	Function as DSR	19	TTL RX
7	Signal ground	20	Function as DTR
8	Function as DCD	21	None
9	TTL RTS	22	Function as RI
10	TTL CTS	23	RS-422 RTS+
11	None	24	RS-422 RTS-
12	RS-422 CTS+	25	5V input jumper selecta ble
13	RS-422 CTS-		

### USB interface/ USB介面



Pin	Description
1	VCC +5V
2	D- Data -
3	D+ Data +
4	GND Ground

### Installation/ 安裝相關

- COM1 (9Pin-female D-Sub Connector): This is a standard RS232 interface that compliant with PC general serial port. COM1(DB9F)標準RS232連接端與電腦的一般通訊端相容
- USB connector/ USB連接端: The USB converter requires to connect with PC that equipped with any standard USB Type A port c compliant with Universal Serial Bus Specification 1.1. USB數據轉換器需要連接有標準USB A port 並相容USB1.1的電腦

The proper operation of the interface in the computer requires the installation of a device driver.

The device driver can be downloaded from the following link:

<http://www.cermate.com/>

The file to be downloaded from "UR25/43 Driver"

此操作介面連接於電腦時需要安裝驅動程式，驅動程式可至本公司網站 WWW.CERMATE.COM下載，可從 "UR25/43 Driver" 進行連結下載

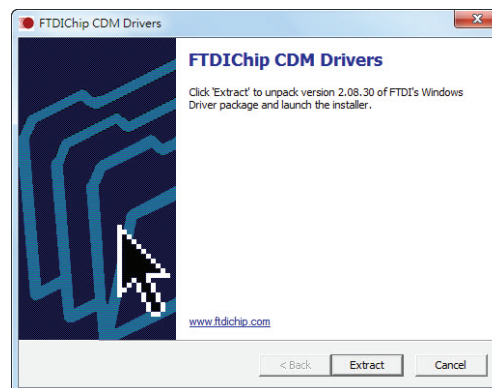
#### System requirements for driver installation/ 驅動程式系統需求:

- Pentium II or higher
- Windows 98/ME/NT/2000/XP/Vista/7/8/8.1
- 256MB RAM
- 1GB hard disk space/ 1GB硬碟空間

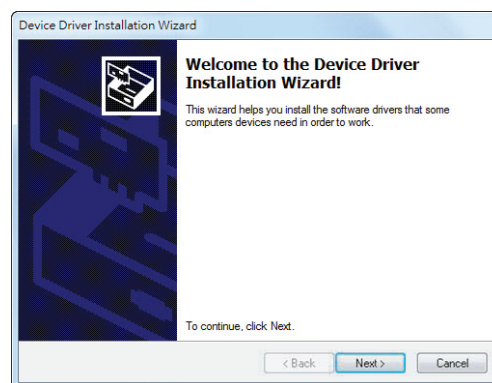
- The driver comes in a self-installing executable file with the name "USB Serial Port(COM?)"; the installation of the driver must be done before connecting the converter to the USB port of the computer. 驅動程式會自行執行"USB Serial Port(COM?)"名稱的檔案，請注意連結USB數據轉換器至電腦前，驅動程式需於電腦安裝完成

To install the driver, launch the downloaded executable file, then follow the instructions on screen. You must accept the terms of the license agreement to complete the installation procedure.

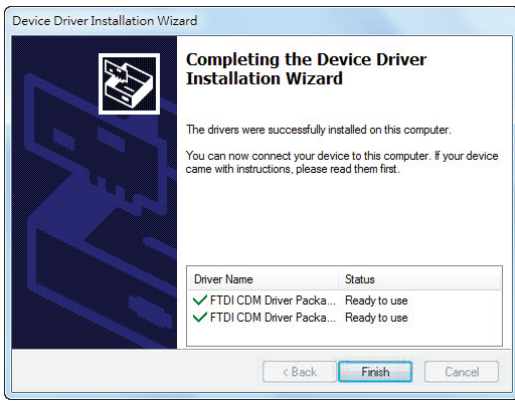
請依照下面螢幕上的指示進行安裝，必須接受許可協議才能完成安裝步驟



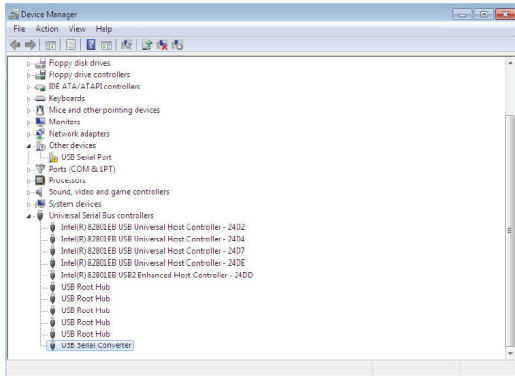
Click "Extract" to unpack Windows Drive package and launch the installer. 點選"Extract"後開始安裝驅動程式



Click "Next" start to install the Drivers for the UR25 product. 點選"Next"執行後續驅動程式安裝步驟



Click "Finish"  
The device driver install completed.  
點選"Finish"完成驅動程式安裝



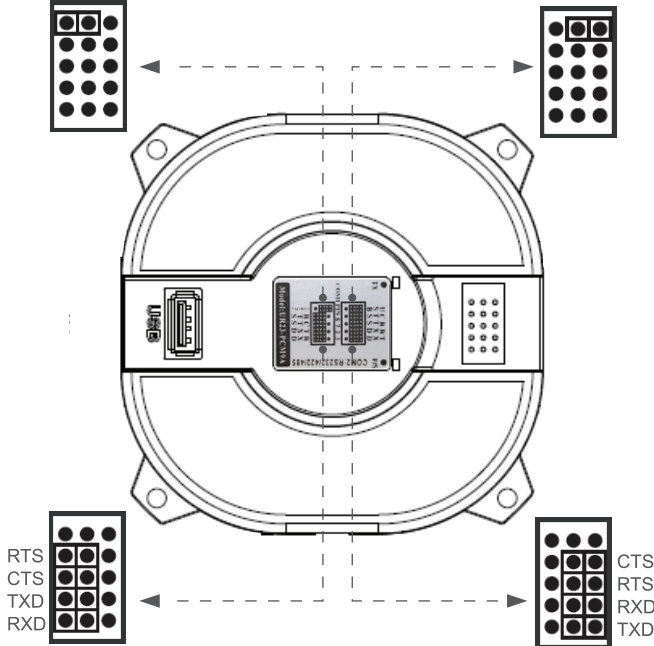
You can check the Device Manager to see the USB Serial Converter.  
可以進入「裝置管理員」查看USB數據轉換器是否完成安裝

5

## Jupmer Selection/ 跳線介面說明

Power From 25Pin-male D-Sub Connector  
(Pin-25:+5V / Pin-7:0V)

Power From USB



6

## Technical Safety Notes/ 技術安全事項

### Qualified personnel/ 合格人員

The device should only be used by qualified personnel. Qualified personnel as referred to in safety guidelines in this documentation are persons who are authorized to commission, ground, and tag circuits, equipment, and systems in accordance with established safety practice.

此裝置必須由合格人員操作使用。此人依據公認的安全指示須有合格的委託、理由和電路、設備和系統

The equipment/system or the system components may only be used for the applications described in this manual, and only in combination with the equipment, components, and devices of other manufacturers as far as this is recommended or permitted by Cermate.



The product will function correctly and safely only if it is transported, stored, set up, and installed as intended, and operated and maintained with care.

裝置和系統或是系統元件只能使用於此手冊描述的應用範圍，而且只和本公司建議或允許的裝置、元件和其他製造業者設備進行連接。當產品被謹慎操作和維修時將會正常和 safely 地運作除非有目的的進行運輸、儲存或是安裝。

### Warnings/ 注意事項

- Do not use this product near water or install it in areas subject to excessive dust, oily mist, conductive dust, corrosive gas and flammable gas.
  - Do not mount this product on the an unstable location and subject to high temperature, moisture, or rain.
  - To avoid damage of internal components, do not place the product on a vibrating surface.
  - Your device and its enhancements may contain small parts. Please keep them out of the reach of small children.
1. 請勿在有水的地方使用產品或把產品安裝在有過度粉塵、油性霧氣、導電的粉塵、腐蝕性和可燃性的氣體區域。
  2. 請勿將產品安裝於不穩定和易受高溫、濕氣和雨水的區域。
  3. 避免傷害產品內部組件，不要將產品放在會震動的表面。
  4. 產品和其增強模組可能包含小型組件，請勿讓小孩拿取或把玩。



The RS232 Extension cable is only used for industrial PLC and not used for IT or consumer products.

RS232延長轉換線只限於工業PLC上，不適用於IT產品和消費性電子產品

Indicated loss of life, severe personal injury, or substantial property damage will result if proper precautions are not taken.

如果沒有執行適當的預防措施可能將會導致生命損害、嚴重受傷和巨大的財產損失

7

### Disposal Instructions/ 廢棄物處理說明

Do not throw this electronic device into the trash when discarding. To minimize pollution and ensure utmost protection of the global environment, please recycle.

當丟棄此電子產品時請勿直接丟進垃圾桶。為了減少汙染及確認對全球環境的保護，請回收此產品。

### Applicable Standards/ 相關規範

The products have been designed for use in an industrial environment in compliance with the 2004/108/EC directive/ 本產品適用於工業環境並符合2004/108/EC規範。

The products have been designed in compliance with/ 本產品符合以下法規

- EN 55022: 2010, Class B
- EN 61000-3-2: 2006 + A1: 2009 + A2: 2009
- EN 61000-3-3: 2008
- EN 61000-3-3: 2008
- EN 55024: 2010

IEC 61000-4-2: 2008; IEC 61000-4-3: 2006 + A1: 2007 + A2: 2010  
IEC 61000-4-4: 2012; IEC 61000-4-5: 2005; IEC 61000-4-6: 2008  
IEC 61000-4-8: 2009; IEC 61000-4-11: 2004

The installation of these devices into the residential, commercial and light-industrial environments are allowed only in the case that special measure are taken in order to get the conformity to IEC-61000-6-3

本產品若要安裝於住宅空間或商業及輕工業的環境時，必須加測特殊檢驗以符合IEC-61000-6-3

### Copyright Declaration/ 版權聲明

Reproduction of the contents of this copyrighted document, no part of this publication may be reproduced, stored in a retrieval system, or transmitted, in any form or by any means, electronically, by photocopy, recording or otherwise, without the prior written permission of Cermate Inc.

本文件內容版權為Cermate Technologies Inc.所有，未經本公司許可，本出版品任一部分不可以任何形式或電子的辦法、攝影、錄製或是其他方法在檢索系統裡進行複製及儲存或是傳輸。

8