

PM Designer

Version 2.1.7.24---2.1.7.29

Product Release Notes



Cermate Technologies Inc.

Copyright 2017

July 21, 2017


RN-210729.00

PM Designer Version 2.1.7.29

PM Designer 2.1.7.29 delivers fixes and corrections of previous version. This release notes document highlights the features and corrections made in version 2.1.7.29.

New Features and Enhancements

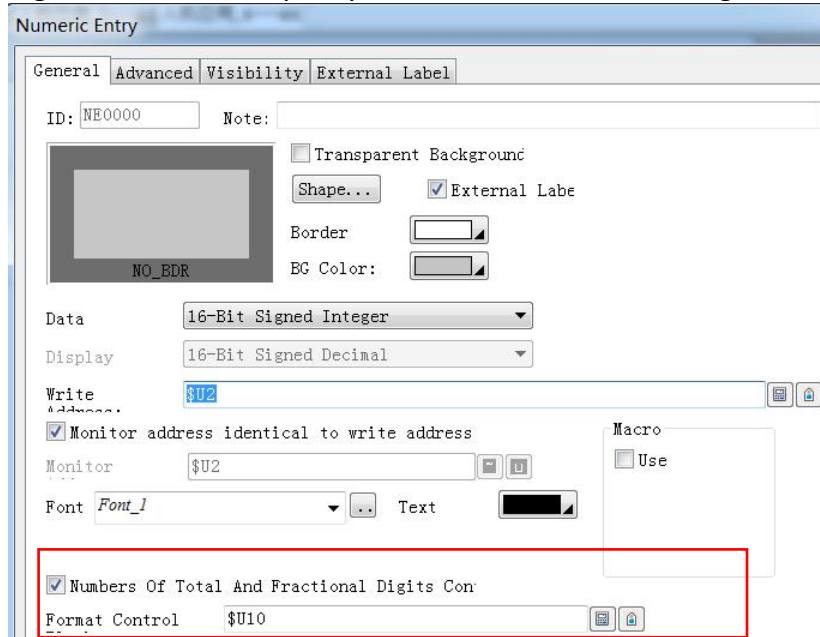
Editor

No.	Related To	Feature/Enhancement Description
A1	Container	<p>Since V2.1.7.24, the Container was added into Object, it can browse webs in PE, and read PDF, Word, etc. It can be used to integrate IT and OT software to achieve software integration</p>  <p>The screenshot shows two buttons: 'Object' and 'Container'. The 'Object' button is a small rectangular button with a light gray background and a thin border. The 'Container' button is a larger rectangular button with a light gray background and a thin border, positioned below the 'Object' button.</p>
A2 #961	Macros	<p>Since V2.1.7.25, the macro command GetID can get the model information. eg. \$U1000 = GetID(3)</p>
A3 #964	Display FARSI string	<p>Since V2.1.7.25, FARSI strings can display on HMI vertical mode.</p>

A4
#1007

Numeric Entry
and Numeric
Display

Since V2.1.7.29, numbers of total and fractional digits is controllable by the specified words in numeric entry and numeric display. As the example shown in the following picture, click the option "total and fractional digits in numeric entry and numeric display controllable", the word \$U10 will specify the number of total digits and \$U11 will specify the number of fractional digits for the object.

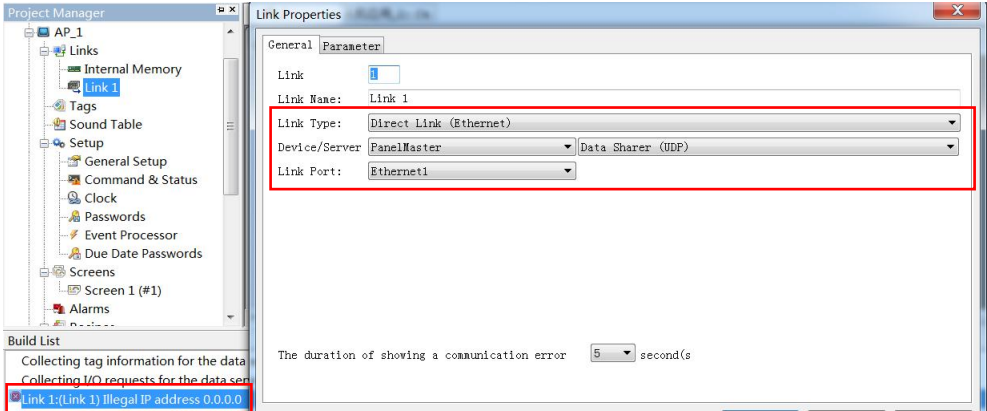
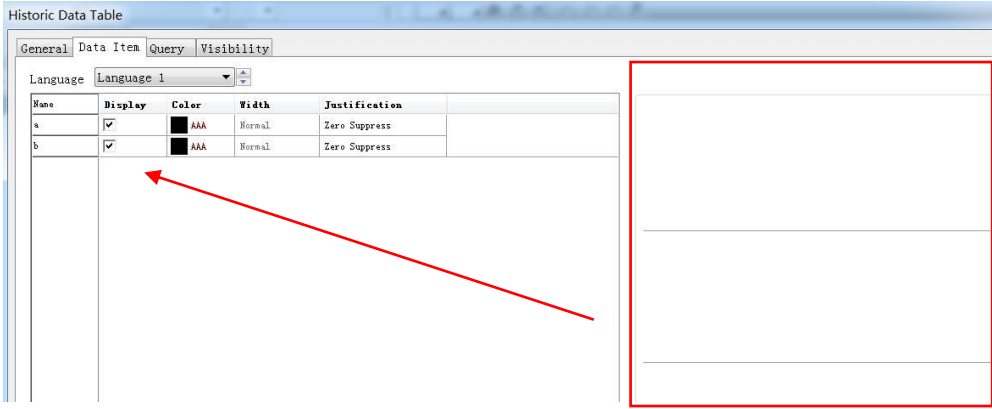


Runtime

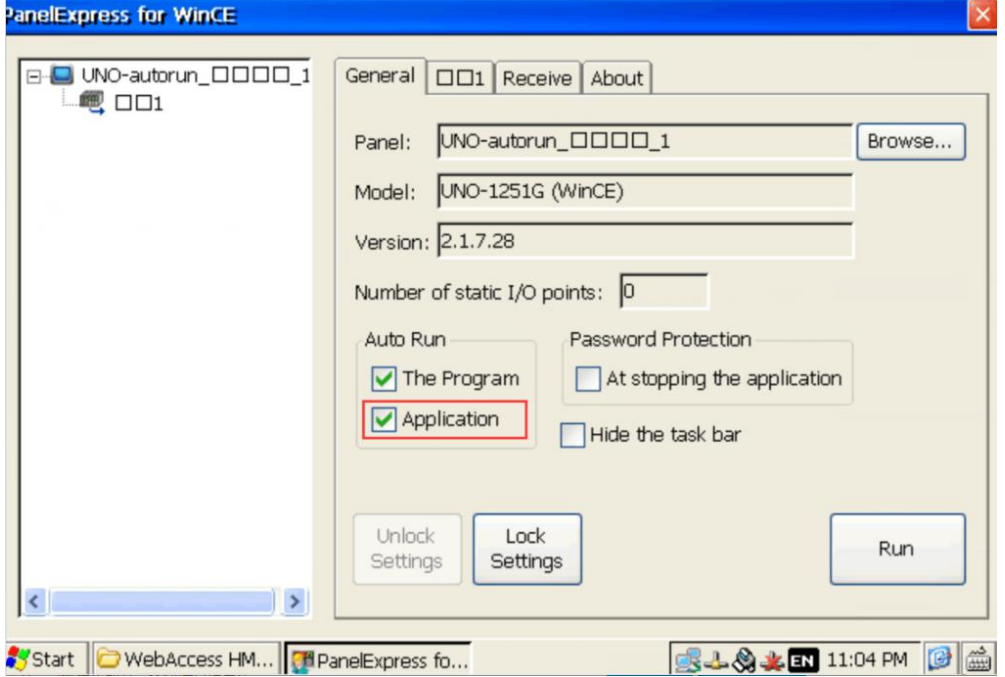

No.	Related To	Feature/Enhancement Description
B1	PE WinCE Resolution	Add 768 x 1366 in PE WinCE for Beckhoff
B2	PanelSim skins	Change PanelSim skins for IMO OEM51

Fixes and Corrections

Editor

No.	Related To	Bug Description
C1 #949	Link	<p>If the link device is Direct link (Ethernet) --- Data Sharer (UDP), it occurs error (Illegal IP address) when compiling the application.</p> 
C2 #951	Text Object	<p>The object text would not be updated immediately when setting text object.</p>
C3 #953	Historic Data Table	<p>1. The data items would display on the right when choosing "Display" for the first time, it would display when clicking twice.</p>  <p>2. It would error when entering 12 and clicking "OK".</p>

<p>C4 #960</p>	<p>VNC</p>	<p>SX32 could not connect VNC.</p>
<p>C5 #963</p>	<p>WinCE Model</p>	<p>On WinCE models, applications could not run automatically when booting, click "The Program" under "Auto Run", there is no "Application" option.</p> <p>Now the "Auto Run Application" option is available.</p>

		
C6 #971	Screen Button	When simulating or connecting an HMI, external label would disappear when the screen button is controlled by a bit.
C7 #972	Text Database	When edit the selected string in text table, it could not jump to the selected string ID.
C8 #974	Receipt selector	When the model is PE and there is receipt selector on the screen, the PanelSim would crash when simulating.
C9 #977	Macros	<p>It would error when using "closescreen" command to close the window.</p> 

Runtime

No.	Related To	Bug Description
D1	User Level	PE would crash when user level was changed and recipe table was visible but was not controlled by user level.
D2	Database	Unable to load recipe/data logger from SQL.