

Cermate



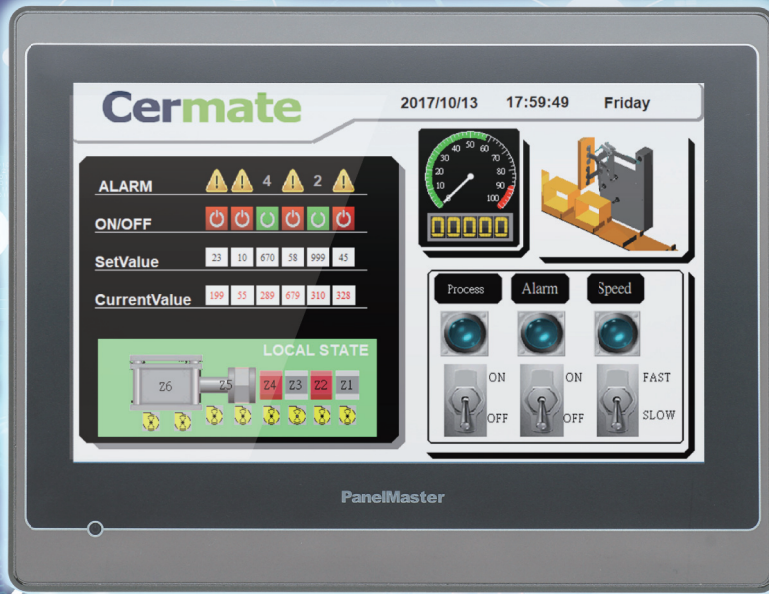
Isolation



E-Mail



IDCS



PanelMaster



USB USB COM2



HMI Server



HMI in Hand

- IDCS COMPUTING
- EDGE COMPUTING
- NETWORK
- REMOTE CONTROL
- REMOTE MONITORING
- DATA COLLECTION

PT2070-WST

The Edge Computing HMI
Slim / Compact / Powerful



Model Name		PT2070-WST__-F8R1
Display	Size	7.0 Inches
	Max. Resolution	800*480
	Type	TFT LCD with LED Backlight
	Color	65536 Color
	Backlight Life (hr)	20,000
	Luminance (cd/m ²)	400 (Remarks 2)
Touch Panel		4-wire Analog Touch Panel
CPU		RISC ARM9 32Bit
Battery Backup SRAM		128KB (Optional: 1MB)
Working Memory		64MB
AP Max Size for Memory		About 40MB
Data File Memory		64MB
Real-Time Clock (RTC)		YES (Unchargeable Battery type, 5 years battery life)
Max Programming Screen		7999 Pages
Max Quantity for Marco Commands		Unlimited
Communication Interface	Micro SD Slot	YES
	USB Host	YES (USB 2.0)
	USB Client	YES (USB 2.0)
	COM1	RS232/422/485 (DB9)
	COM2	A-RS422/485 B-RS232/485 (5-Pin Terminal)
	COM3	RS232 (DB9)
	Ethernet	2:NO / 4:YES
Front Function Keys		F1~F6(Optional)
Audio Out		N/A
Video In		N/A
Front USB Host Port		N/A (Optional)
Power	Input Voltage	24VDC±10% (Isolated)
	Consumption	20W
Environment	Operating Temperature	-10°C ~ 60°C
	Relative Humidity	10% ~ 90%
	Shock (Operation)	Half sine, 20G, 11ms duration
	Vibration (Operation)	Random vibration 1 Grms (5 ~ 500 Hz)
	EMI	FCC Part 15 Class A
	CE	EN61000-6-2, EN61000-6-4
	UL	N/A
	Ingress Protection	IP66
Cooling		Natural Cooling
Dimension WxHxD (mm)		189.6x144.9x30.3mm (Remarks 1)
Cutout Dimension (mm)		175x132.5mm (Cutout compatible with PT070)
Net Weight (Kg)		0.5

*Remarks 1: Depth includes COM Port & Terminal Block Height. / Without front bezel thickness.

*Remarks 2: The actual luminance will have different because of the transmittance through TP and membrane.

PT2070 - WST4B - F8R1

Naming Rule

